

## NEW STATE RECORDS OF THE MAYFLY *LEPTOPHLEBIA BRADLEYI* NEEDHAM<sup>1</sup>

Brad C. Henry, Jr.,<sup>2</sup> Boris C. Kondratieff<sup>3</sup>

**ABSTRACT:** *Leptophlebia bradleyi* Needham is newly recorded from New York, Oklahoma, Texas, and Virginia. This species was previously known from only Alabama, Florida, Georgia, and Louisiana.

The original description of *Leptophlebia bradleyi* was based on male imagoes collected in the Okefenokee Swamp, Georgia (Needham, 1932). Traver (1935) transferred *L. bradleyi* to the genus *Paraleptophlebia*. Berner (1950) discussed this species and noted its uncertain generic placement. Berner (1975) reassigned *bradleyi* to *Leptophlebia* based on adult and nymphal characters and described the nymph and female imago. Edmunds et al. (1976) retained *bradleyi* in *Paraleptophlebia* but noted Berner's (1975) transfer. Berner (1975) summarized the characters for separating *L. bradleyi* from *Paraleptophlebia*.

The previous known range of *L. bradleyi* was the southeastern states of Alabama, Florida, Georgia, and Louisiana (Needham, 1932; Berner, 1977). Recently we examined field-collected, and reared imagoes of this species from Long Island, New York, south central Oklahoma, central Texas, and Virginia. These records represent significant extensions of the known range of *L. bradleyi* far to the northeast and west. Kondratieff and Voshell (1981) briefly discussed *L. bradleyi* in Virginia.

### Material Examined:

New York: Suffolk Co., Manorville, 12 April 1979, Darlene Massey, 5♂.

Oklahoma: Murray Co., Honey Cr. and I-35, 13 March 1981, B.C. Henry, 4♂.

Texas: Irion Co., W. Rocky Cr. at FM 853, 23 Jan. 1981, 5♂; 17 Dec. 1980, ♂ (reared); 18 Dec. 1980, 1♂ (reared); 23 Jan. 1981, 5♂, B.C. Henry. Travis Co., Barton Cr. at Bee Cave, 23 Dec. 1980, 1♂ (reared), 4♀ (2 reared), B.C. Henry.

Tom Green Co., Dov. Cr. on Tweedy Ranch 2 mi SW Knickerbocker, 19 Feb. 1981, 3♂, B.C. Henry. S. Concho R. at Christoval, 23 Dec. 1980, 11♂, Lynn McCutchen.

Virginia: Hanover Co., South Anna River overflow marsh, Co. Rt. 657, 21 March 1978, B.C. Kondratieff, 3♂.

<sup>1</sup>Received October 19, 1981

<sup>2</sup>Department of Biology, Angelo State Univ., San Angelo, Texas 76909. Present address: Department of Biology, Texas A & M Univ., College Sta., TX 77843

<sup>3</sup>Department of Entomology, Virginia Polytechnic Institute & State Univ., Blacksburg, VA 24061

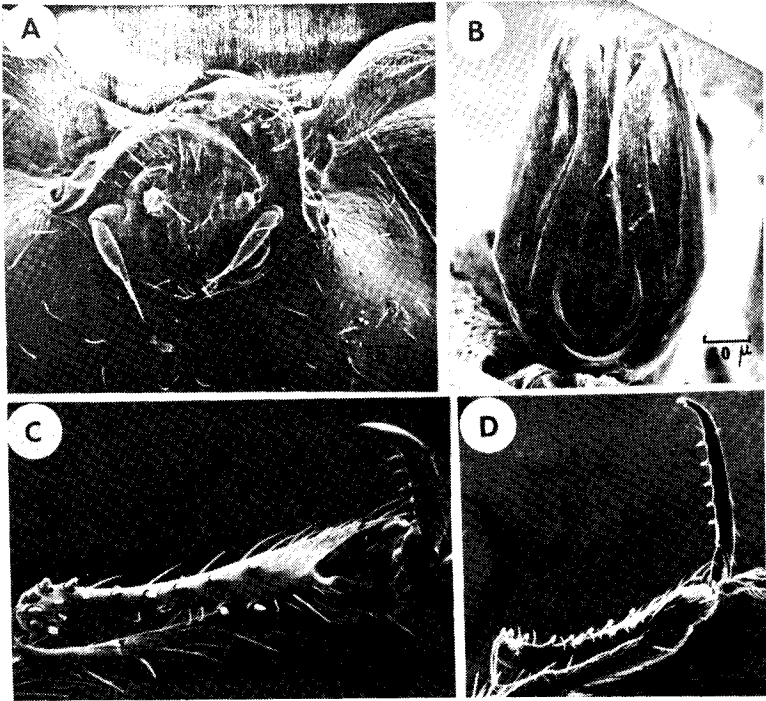
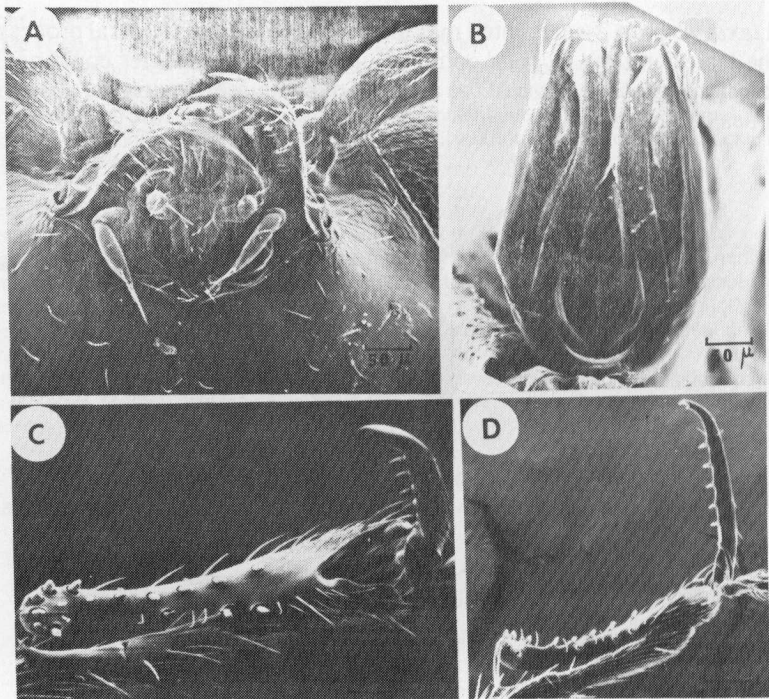


Fig. 3. A. Mouthparts of a female showing segmentation of palpi, ventral view.  
 B. Male genitalia, dorsal view, showing curved dorsal processes and aedeagus.  
 C. Female chela showing 5th tarsal segment with 14 enlarged setae.  
 D. Female chela showing claw with a subapical tooth and 5 enlarged setae.

#### LITERATURE CITED

- Freytag, P.H. 1977. A Review of the Genus *Neogonatopus* for North America (Hymenoptera: Dryinidae). *Ann. Entomol. Soc. Am.* 70(4): 569-476.
- Krombein, K.V. 1979. Dryinidae. pp. 1240-1241. *In* Krombein et al., eds. *Catalog of Hymenoptera in America North of Mexico*, Vol. 2. Smithsonian Inst. Press.
- Olmi, Massimo and Italo Currado. 1979. Revisione del genera *Haplogonatopus* R.C.L. Perkins (Hymenoptera: Dryinidae). *Ann. Fac. Sci. Agr. Univ. Torino* 11: 37-44.
- Perkins, R.C.L. 1905. Leafhoppers and their natural enemies (Part I Dryinidae). *Hawaii Sugar Planter's Assoc., Div. Entomol. Bull.* 1(1): 1-69.
- Raatikainen, Mikko. 1961. *Dicondylus helleni* sp. n. (Hym., Dryinidae), a parasite of *Calligypona sordidula* (Stal) and *C. excisa* (Mel.). *Ann. Entomol. Fenn.* 27(3): 126-137.
- Richards, O.W. 1939. The British Bethyridae (S.L.) (Hymenoptera). *Trans. Royal Entomol. Soc. London.* 89(8): 185-344.



**Fig. 3.** A. Mouthparts of a female showing segmentation of palpi, ventral view.  
B. Male genitalia, dorsal view, showing curved dorsal processes and aedeagus.  
C. Female chela showing 5th tarsal segment with 14 enlarged setae.  
D. Female chela showing claw with a subapical tooth and 5 enlarged setae.