

NOTE

ON THE USE OF PECTINATE MAXILLARY SPINES TO SEPARATE  
*STENONEMA* AND *STENACRON*  
(EPHEMEROPTERA: HEPTAGENIIDAE)

Jensen (1974. Proc. Entomol. Soc. Wash. 76:225-228) removed the *Interpunctatum* group from *Stenonema* and described it as a new genus, *Stenacron*. His diagnosis of the new genus incorrectly states that the nymphs of *Stenacron* have "pectinate spines on the maxillae . . . which are absent in *Stenonema*." Several species of *Stenonema* also have pectinate spines on the crowns of the maxillae. For example, the nymphs of the *Stenonema terminatum* (Walsh) group possess comb-like spines (Fig. 1) very similar to those found on nymphs of *Stenacron* and *Heptagenia*. Use of this character to separate the two genera should, therefore, be discontinued.

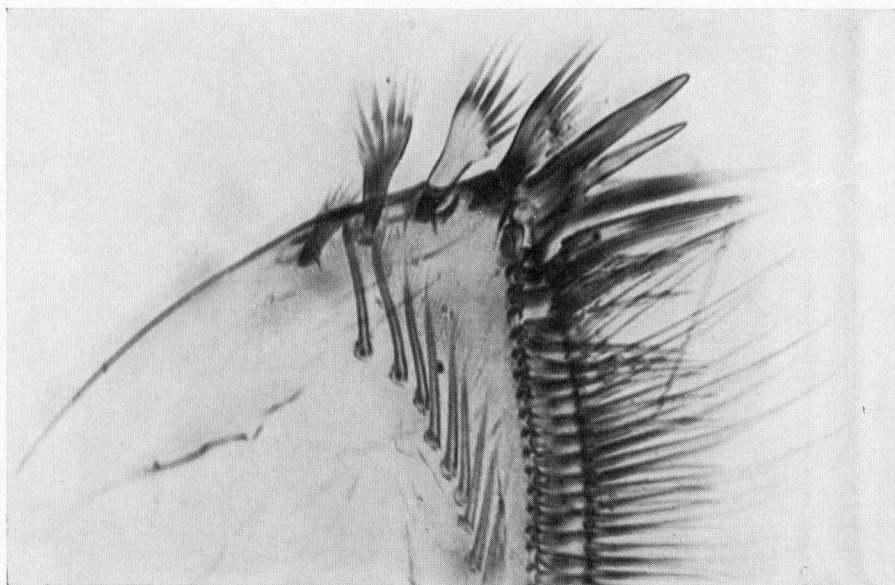


Fig. 1. Pectinate spines on the crown of the maxilla of *Stenonema terminatum ares*.

Philip A. Lewis, *Biological Methods Branch, Environmental Monitoring and Support Laboratory, U.S. Environmental Protection Agency, Cincinnati, Ohio 45268.*