

LONGICORNES.

Prionus Lefebvrei, M. Its larvæ, as might seem, inhabit the olive stumps the camels bring round to the kitchens for fire wood.

Hylotrupes bajulus, L. I have obtained several specimens of this beetle.

Cerambyx cerdo, L., June 16th. Flying among the olives in front of the Russian buildings; it extends to Europe, and is very common on the banks of the Po, in Italy.

Phytæcia humeralis, Redt., May. This little longicorn, which stridulates on seizure, extends to Turkey.

PHYTOPHAGA.

Crioceris melanopa, L., March. Found also by Dr. Festa at Mar Saba. I found another species of a chestnut colour on July 2nd, which I think extends to Northern India.

Labidostomis toxicornis, Fabr., June 2nd. On the branches of the garden pepper tree, *Schinus molle*.

Coptocephala scopolina, L., August 22nd.

PSEUDOTRIMERA.

Coccinella 7-punctata, L., April to June. In the fields at Jaffa and Jerusalem, and fond of resting on the ears of corn.

Vineyard, Totnes, Devon.

TRICHOPTERA, PLANIPENNIA, AND PSEUDO-NEUROPTERA
COLLECTED BY DR. T. A. CHAPMAN AND MR. G. C. CHAMPION
IN THE UPPER AND LOWER ENGADINE IN JULY, 1900.

BY ROBERT McLACHLAN, F.R.S., &c.

During their stay at Pontresina (Upper Engadine) and Guarda (Lower Engadine) in 1900 Dr. Chapman and Mr. Champion collected a not inconsiderable number of "*Neuroptera*," which they kindly gave me. Their enumeration may serve as an item in local knowledge of the Swiss Fauna [a few species from outside the limits mentioned above are enclosed in square brackets].

In this Magazine, vol. xvii, pp. 217—222, I gave an account of the species collected by myself at Pontresina and neighbourhood in August, 1880. As the results of the labours of a specialist the number of species there enumerated is considerably greater, nevertheless, some species are included in the present List from the same quarter that were not found by me. I am not aware of the publication of any previous List from Guarda.

TRICHOPTERA.

PHEYGANEIDÆ.

[*Phryganea striata*, L. :—1 ♀, Davos, G. C. C.].

LIMNOPHILIDÆ.

Limnophilus rhombicus, L. :—1 ♀, Guarda, T. A. C., of the rather pronounced form occurring at high alpine and high northern localities.—*L. flavicornis*, F. :—1 ♀, Guarda, G. C. C., very heavily marked with black.—*L. extricatus*, McLach. :—1 ♀, Guarda, T. A. C.

Asynarchus cænosus Curt., var. *arcticus*, Kol. :—Pontresina, G. C. C.

Stenophylax picicornis, Pict. :—Pontresina, G. C. C.—[*latipennis*, Curt. :—Davos, ♂, G. C. C.; Ragatz, ♀, G. C. C.; both slightly doubtful].

Halesus ruficollis, Pict. :—Pontresina, G. C. C.

Melanæa flavipennis, Pict. :—Pontresina, T. A. C., G. C. C.; Guarda, G. C. C.; [Davos, G. C. C.].

Drusus discolor, Rbr. :—Pontresina, T. A. C.; Guarda, G. C. C.—*D. chrysolus*, Rbr. : Pontresina, T. A. C.; Guarda, G. C. C.—*D. melanchætes*, McLach. :—Pontresina, T. A. C., G. C. C.—*D. nigrescens*, M.-D. :—Pontresina, G. C. C.; Guarda, T. A. C.

Potamorites biguttatus, Pict. : Guarda, G. C. C.

SERICOSTOMATIDÆ.

Silo nigricornis, Brauer :—Pontresina, T. A. C., G. C. C.

Lithax niger, Hag. :—Pontresina and Guarda, G. C. C.

HYDROPSYCHIDÆ.

Plectrocnemia conspersa, Curt. :—Guarda, G. C. C.

RHYACOPHILIDÆ.

Rhyacophila vulgaris, Pict. :—Pontresina [and Davos], G. C. C.

PLANIPENNIA.

SIALIDÆ.

Sialis lutaria, L. :—Pontresina, G. C. C.; Guarda, T. A. C.

RHAPHIDIIDÆ.

Rhaphidia flavipes, Stein :—Guarda, G. C. C.

PANORPIDÆ.

Panorpa vulgaris, Imhoff :—Guarda [and Davos], G. C. C. No opinion is here expressed as to the specific validity of the form or otherwise.

CHRYSOPIDÆ.

Chrysopa perla, L. :—Pontresina, T. A. C.; Guarda, G. C. C., in abundance.—*Ch. prasina*, Burm. (*aspersa*, Wesm.) :—Guarda, G. C. C.—*Ch. ventralis*, Curt. :—Guarda, G. C. C.—*Ch. vulgaris*, Schneid. :—Guarda, G. C. C.

HEMEROBIDÆ.

Megalomus hirtus, L. :—Guarda, G. C. C., very common; Pontresina, one T. A. C.

Hemerobius nervosus, F. :—Pontresina, G. C. C.—*H. Mortoni*, McLach. :—Pontresina, T. A. C. and G. C. C.; Guarda, G. C. C.—*H. nitidulus*, F. :—Guarda, T. A. C.; Pontresina, G. C. C.—*H. pini*, Steph. :—Guarda, G. C. C., one.—*H. atrifrons*, McLach. :—Guarda and Pontresina, T. A. C. and G. C. C.—*H. concinnus*, Steph., var. *4-fasciatus*, Reuter :—Guarda and Pontresina, G. C. C.; Pontresina, T. A. C.

PERLIDÆ.

PSEUDO-NEUROPTERA.

Dictyopteryx intricata, Pict. :—Pontresina, G. C. C., very large and dark.—
D. alpina, Pict. :—Guarda, Pontresina [Davos], G. C. C., many examples of large
 size and very strongly marked.—*D. fontium*, Ris :—Guarda [Davos and Ragatz],
 G. C. C. I had this species (not then recognised) in view when I penned my
 remarks on *D. alpina* in Ent. Mo. Mag., xvii, p. 221.

Chloroperla rivulorum, Pict. :—Pontresina, Guarda [Davos], G. C. C.

Isopteryx montana, Pict. :—Pontresina, G. C. C.—[*tripunctata*, Scop. :—
 Davos, G. C. C.]

Teniopteryx neglecta, Albarda :—Pontresina and Guarda, very common, G. C.
 C., all females.

Also some undetermined *Nemoura* and *Leuctra*.

EPHEMÉRIDÆ.

Cloëon dipterum, L. :—Pontresina, T. A. C., subimago.

[*Rhithrogena semicolorata*, Curt. :—Davos, G. C. C.]

Ecdyurus venosus, F. :—Pontresina, G. C. C., T. A. C. These examples are of
 unusually large size, and were no doubt from the intensely cold Lac St. Moritz, at
 which lake I found the same form in abundance in 1880.

ODONATA.

Sympetrum striolatum, V. d. L. :—Guarda, G. C. C.—*S. flaveolum*, L. :—
 Guarda, very common, G. C. C.

[*Æschna cyanea*, Müller :—Ragatz, G. C. C.]

Lestes dryas, Kby. (*nympha*, Selys) :—Guarda, G. C. C.—*L. barbara*, V. d.
 L. : Guarda, G. C. C.

Lewisham, London : May, 1901.

A NEW SPECIES OF TRICHOPTERA FROM SWITZERLAND.

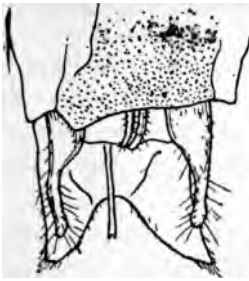
BY ROBERT McLACHLAN, F.R.S., &c.

Early in April, 1899, Dr. Chapman collected a few *Trichoptera* at
 Locarno (Ticino) which he kindly gave to me. Amongst them was a
 single ♂ of a *Drusus* that appeared to be new. Thinking it might be
 known to Dr. Ris, but undescribed, I submitted the example to him,
 he did not know it, and agreed with me that it represented a new
 species ; he also kindly supplied the accompanying drawings.

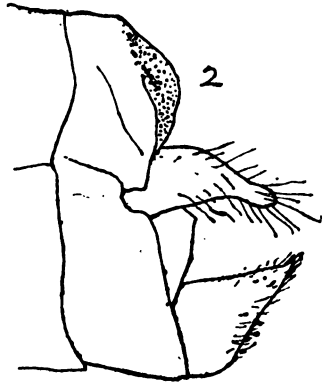
DRUSUS CHAPMANI, n. sp.

Belongs to the group of black species represented by *D. Muelléri*, McLachlan,
D. nigrescens, Meyer-Dür, and *D. melanchates*, McLachlan ; most allied to *D.*
Muelleri.

Body black, neck with golden hairs. Antennæ black. Legs blackish, but with
 close fine golden pubescence, giving them a golden sheen. Anterior wings black when
 fresh, but soon fading to leaden-grey, without any small pale points, but with a
 conspicuous white spot at the thyridium and another at the arculus ; neuration
 black. Posterior wings grey, darker towards the apex, and with darker fringes,



neuration blackish. Appendages formed much after the same plan as in *D. Muelleri*, but differing therefrom. Superior appendages much dilated at the base if viewed laterally, and then narrowed into a short finger-shaped



process, which is turned down; this process is much shorter than in *D. Muelleri*. Intermediate appendages not very clear, apparently short, broad, approximate, and curved upwards. Inferior appendages somewhat as in *D. Muelleri*, but broader and less widely divergent.

Length of body, 9 mm.

Expanse of wings, 26 mm.

Hab.: Switzerland (Locarno), April 6th, 1899, one ♂ (*Dr. T. A. Chapman*) in my collection.

It would be useless to draw a comparison with the other black species (*nigrescens* and *melanchætes*), because these differ widely in their anal structure, whereas with *Muelleri* there is apparently real affinity and at the same time quite sufficient specific differences. Amongst other species there is slight analogy with *D. alpinus*.

It may be that *D. Chapmani* is an early species; few entomologists have begun alpine collecting so soon as the first week in April; and it may also be that it is peculiar to the warm trans-alpine district in Switzerland and the adjoining parts of North Italy.

EXPLANATION OF FIGURES.

Fig. 1, apex of abdomen of ♂ from above (not quite even).

Fig. 2, same from side.

Lewisham, London:
June 9th, 1901.

NOTES ON CERTAIN PALÆARCTIC SPECIES OF THE GENUS *HEMEROBIUS*: *H. CONCINNUS*, AND ITS VAR. *QUADRIFASCIATUS*.

BY KENNETH J. MORTON, F.E.S.

Some time ago, when working in conjunction with Mr. McLachlan on the genus *Hemerobius*, I had occasion to examine minutely *H. concinnus* and its so-called var. *quadrifasciatus*. The latter form, although very abundantly different in facies from the typical *concinnus*, had remained without a distinctive name until 1894, when *Reuter* applied to it the term *quadrifasciatus*.

THE
ENTOMOLOGIST'S
MONTHLY MAGAZINE:

CONDUCTED BY

C. G. BARRETT, F.E.S. W. W. FOWLER, M.A., F.L.S.

G. C. CHAMPION, F.Z.S. R. McLACHLAN, F.R.S.

J. W. DOUGLAS, F.E.S. E. SAUNDERS, F.L.S.

LORD WALSHINGHAM, M.A., LL.D., F.R.S., &c.

SECOND SERIES—VOL. XII.

[VOL. XXXVII.]

“An attempt had been made to show the impossibility of preventing in the long run the natural spread of insects, the futility of attempts at extermination of well established pests, and the folly of viewing with alarm matters that had been going on for thousands of years without very great hurt to human interests.”—
L. MARLATT (*in Presidential Address to Assoc. Ec. Entomologists, 1899*).

LONDON:

GURNEY AND JACKSON (MR. VAN VOORST'S SUCCESSORS),

1, PATERNOSTER ROW.

1901.