

Tyta luctuosa, Four-spotted
One at Red Cow, Cholsey 16/7/04 during the
Society's moth night (TR). A new site record.

Lygephila pastinum, Blackneck
One at Red Cow, Cholsey 16/7/04 during the
Society's moth night (TR). A new site record.

CONTRIBUTORS

Thanks are due to the following members for their submissions:

(CD) Colin Dibb, (JH) Jan Haseler, (JHFN) John Notton, (MS) Martin Sell, (MWS) Malcolm Storey,
(TR) Tony Rayner.

RECORDER'S REPORT FOR ENTOMOLOGY and OTHER INVERTEBRATES 2004

Chris Raper

I'm not sure what your impressions were of the year but to me it typified a 'good' year – not exceptional but reassuringly 'normal' in a decade of wild swings in the weather and predictions of impending doom. In our area we didn't have serious droughts or floods – and after a slow start the insect life seemed to flourish.

The general trend for warmer winters and mild summers seems to have benefited species that have recently colonised the UK or that have strongholds in the warmer parts of continental Europe. I help run a recording scheme for tachinid flies and we have noticed a group of species, which have always been uncommon here, are now definitely expanding their range and this has been ably demonstrated in our area with the finding of many new sites for *Cistogaster globosa* (extremely rare) and *Phasia barbifrons* (new to the UK in 1999).

This trend was also backed up with the plethora of Hornet (*Vespa crabro*) sightings recently and the continued spread of Roesell's Bush-cricket (*Metrioptera roeselii*). There can't be many grassy places around Reading where it isn't possible to hear their distinctive high-pitched cicada-like trill. Though I have noticed that many people (even some birdwatchers with good hearing) fail to pick them out, so they must have a very limited frequency range.

Many thanks to all those members who took the time to contribute records – your efforts are much appreciated. I hope everyone sees plenty of interesting things in 2005 – note them down and send them in for the next Naturalist!

Crustacea

Amphipoda

Crangonyx pseudogracilis (an amphipod)
14/3/04, Kintbury Newt Ponds BBOWT Reserve,
SU388663, Top Pond. [MWS] An introduced
North American species.

Physa (not *fontinalis*) (introduced bladder snails)
14/3/04, Kintbury Newt Ponds BBOWT Reserve,
SU388663, Bottom Pond. Shell sinistral, mantle
with short finger-like processes. Spire too long
and processes too short for the native *P.*
fontinalis. [MWS] Another gift from somebody's
aquarium!

Insecta

Orthoptera

Metrioptera roeselii Roesel's Bush Cricket
Heard in the meadow on numerous occasions
through the summer, Red Cow, Cholsey [AR]
20/7/04, Red Cow, Cholsey, SU593868, in long
grass, East Meadow, [MWS]
5/9/04, 5-acre Field, Moor Copse, Tidmarsh,
Berks [MGTR]

Leptophyes puntatissima Speckled Bush Cricket
23/8/04, 1 seen in garden. Purley-on-Thames,
Berks. "on wall of house in the drive" [MGTR]

Odonata

Libellula depressa Broad-bodied Chaser
One or two on various dates between 13/5/04 - 22/6/04, Red Cow, Cholsey [AR]
10/6/04. 1 seen in Park Wood, Moor Copse Reserve, Tidmarsh, Berks. "over pond – unusual record for Moor Copse" [MGTR]

Calopteryx splendens Banded Demoiselle
Vagrants probably drifting up from the Thames – singles on 8/6/04, 10/6/04, 23/7/04, 9/8/04 and 1/9/04, Red Cow, Cholsey [AR]

Calopteryx virgo Beautiful Demoiselle
14/6/04, 2 seen mating in Hogmoor Copse, Moor Copse Reserve, Tidmarsh, Berks. [MGTR]

Coenagrion puella Azure Damselfly
10/6/04, 6 mating near the pond in Park Wood, Moor Copse Reserve, Tidmarsh, Berks. [MGTR]

Gomphus vulgatissimus Club-tailed Dragonfly
30/5/04, 1 seen in garden, Purley-on-Thames, Berks. [MGTR]

Anax imperator Emperor Dragonfly
Singles on 19/6/04, 14/8/04, 18/8/04, 19/8/04 and a pair on 11/9/04, Red Cow, Cholsey [AR]

Aeshna cyanae Southern Hawker
Singles on 19/6/04, 14/8/04, 18/8/04, 19/8/04 and a pair on 24/8/04, Red Cow, Cholsey [AR]
21/8/04, 20 in 5-acre field, Moor Copse Reserve, Tidmarsh, Berks. [MGTR]

Aeshna juncea Common Hawker
6/8/04, 4 in Moor Copse Wood, Tidmarsh, Berks. [MGTR]

Aeshna mixta Migrant Hawker
One or two seen on various dates between 23/8/04 and 11/9/04, Red Cow, Cholsey [AR]

Aeshna grandis Brown Hawker
Singles on 5 days between 15/7/04 and 10/8/04, Red Cow, Cholsey [AR]

Ephemeroptera

Ephemera lineata (a mayfly)
31/5/04, Hartslock Reserve, Oxon, SU616795. [CMTR] This rare mayfly is locally common along the Thames in our area and can often be found miles from the river.

Coleoptera

Cychrus caraboides Snail Hunter
13/6/04, Blacklands Copse, SU543682, under rotting Pine log. Hissed when prodded! [MWS]

Cylindrinotus laevioctostriatus (a darkling beetle)
12/2/04, Prospect Park, SU692728, after dark, numerous adults, some *in cop*, at base of Horse Chestnut trunk and in cracks in bark, near offices. [MWS]

Sinodendron cylindricum Rhinoceros Beetle
31/5/04, on fallen Beech log, Bowdown BBOWT Reserve, SU505654, just off Bomb Dump plateau. [MWS]

Dorcus parallelipedus Lesser Stag Beetle
4/6/04 one on gravel drive & 1/8/04 one in meadow, Red Cow, Cholsey. [AR]

Lucanus cervus Stag Beetle
Red Cow, Cholsey:
7/6/04, 4 on wooden posts in orchard between 21.30 and 22.00.
8/6/04. At least 5 (two on same posts at dusk.)
9/6/04. Female on ground near meadow entrance.
29/6/04, 2 flying at 21.30
14/7/04, 1 flying in garden at 21.45 [TR]
25/5/04, 1 in garden, Purley-on-Thames, Berks. "flying 11am being attacked by Bluetit" [MGTR]
14/6/04, 2 in Hogmoor Copse, Moor Copse Reserve, Tidmarsh, Berks. "One flying 10am landed on me! The other on ground" [MGTR]

Melolontha melolontha Cockchafer
A record year for this species at Red Cow, Cholsey. Moth trap counts in 04, 26th April: 2, 9th May: 33, 10th May: 55, 14th May: 9, 22nd May: 1, and 10th June: 1. [AR]

Amphimallon solstitialis Summer Chafer
Specific dates not recorded but seen regularly at Red Cow, Cholsey during late June/ early July [AR]

Cetonia aurata Rose Chafer
3 seen flying around a bush in my garden in Tilehurst, Reading on various dates a week either side of 14/5/04. [CMTR]

Cassida rubiginosa Thistle Tortoise Beetle
7/7/04, Black Dam, Hants, SU653516, Pale brownish larvae on Lesser Knapweed, Meadow. Reared. While feeding the larvae retain a mass of excrement on the two posterior appendages. When fully grown they shed this and remain stationary for about a week (eg caught 7th, pupa found on 13th) before pupating. (This food plant is not listed in Bullock.) [MWS]

Cassida vibex (a tortoise beetle)
7/7/04, Black Dam, SU653516, Green larva on Lesser Knapweed, Meadow. Reared. [MWS]

Pyrochroa serraticornis Red-headed Cardinal beetle
5/6/04, Turville Heath [CD]

Diptera

Conops ceriaeformis (a fly)
16/8/04, Upper Bucklebury, SU542683, Female on cultivated Golden Rod flowers. [MWS]

Sicus ferrugineus (a fly)
7/7/04, Black Dam, SU653516, Meadow. [MWS]

Asilus crabroniformis Hornet Robber Fly
A record year for this species at Red Cow, Cholsey. [AR] See separate article.

Leptarthrus brevirostris (a robber fly)
May 04, Hartslock Reserve, Oxon. [CMTR]

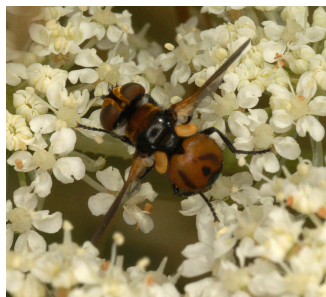
Leucozona laternatia (a hoverfly)
7/8/04. Moor Copse Reserve, Tidmarsh, Berkshire. [CMTR]

Volucella inanis (a hoverfly)
3/8/04. Tilehurst, Reading, Berks. Seen nectaring on garden plants. [CMTR]

Acinia corniculata (a gall fly)
7/7/04, Black Dam, SU653516, on Lesser Knapweed, Meadow. Only one specimen seen, but this seen three times as it kept disappearing into the plant when I tried to photograph it, then crawling back to the top when I next went past. Identified from photos (mainly wing pattern). [MWS]

Rhinophora lepida (a fly)
12/7/04, Upper Bucklebury, SU542683, Visiting Ox-eye Daisy in meadow. Eyes bare, arista with short hairs, parafacalia setulose [MWS]

Cistogaster globosa
(a parasitic fly)
20/7/04, Red Cow, Cholsey, SU593868, Small orange-bodied parasite fly feeding on Wild Carrot flowers, East Meadow. [MWS]



Cistogaster globosa

A new location for this very rare species.
8/8/04, Hartslock Reserve, Oxon, SU616796. [CMTR] Another new location.

Phania funesta (a parasitic fly)
20/7/04, Red Cow, Cholsey, SU593868, Small black parasite flies feeding on Yarrow and Ox-eye Daisy flowers, East Meadow, [MWS]

Phasia barbifrons (a parasite fly)
19/8/04, Male, Upper Bucklebury, :SU542683, Male, on garden goldenrod flowers. [MWS]

Phasia hemiptera (a parasite fly)
24/4/04, nectaring on Lesser Celandine flowers. Moor Copse Reserve, Tidmarsh, Berks. [CMTR]. This species is usually seen in the second brood in mid summer – the early brood is rarely seen.
3/8/04. Tilehurst, Reading, Berks. Many individuals seen nectaring on garden plants. [CMTR]

Chaoborus crystallinus (a phantom midge)
14/3/04, Kintbury Newt Ponds BBOWT Reserve, SU388663, larva in Top Pond. Pupated 18th or 19th; adult emerged 23rd March (between 10am and 7pm). Keys out to *C. crystallinus*, but abdomen banded. [MWS]

Ornithomya avicularia
(a flat fly)
28/7/04, Upper Bucklebury, SU542683, on dead juvenile Blackbird under window. Wing length 7mm. 8 scutellar bristles. With attached phoretic feather louse (Mallophaga). [MWS]



Ornithomya avicularia

Hymenoptera

Dipogon variegatus (a spider-hunting wasp)
21/8/04, Female, Upper Bucklebury, SU542683, Female, indoors, at window, indoors. [MWS]

Abia sericea (a clubhorned sawfly)
22/7/04, Noar Hill HIOWWT Reserve, SU741320, Male imago on Ash and Dogwood/Clematis leaves, High ground between pits. When disturbed by photography the sawfly moved between two small patches of shrubby regrowth about 20m apart. Although of different species (Ash regrowth vs. a clump of Traveller's Joy and Dogwood) they were of similar size (about 1.5m across and 0.6m high) colour, tone, morphology (multi-stemmed regrowth) and even leaf shape (Ash and Clematis). [MWS]

Diplolepis rosae (Robin's pincushion gall wasp)
15/5/04, Hartslock Reserve, Oxon, SU616796. Observed ovipositing on fresh Sweet Briar shoots. This species is very small (5mm) but surprisingly easy to observe and photograph – just spend a few minutes looking on Sweet Briar on Hartslock in late May and you can usually find one or two. [CMTR]

Gasteruption assectator (a parasitoid wasp)
31/7/04, Female at Moor Copse Reserve,
Tidmarsh, Berks. [CMTR]

Gasteruption jaculator (a parasitoid wasp)
31/7/04, Female at Moor Copse Reserve,
Tidmarsh, Berks. [CMTR]

Osmia bicolor (a solitary bee)
16/5/04. Hartslock Reserve, Oxon. Seen building
its wigwam nests out of grass over the snail shell
it had previously stocked with food and eggs.
[CMTR]

Vespa crabro Hornet
4/8/04 near Aldermaston Wharf [CD]
1/9/04 near Eversley [CD]
23/5/04, 1 in Moor Copse Wood, Tidmarsh,
Berks and
21/7/04 common at same spot "going in & out of
usual nest in split ash tree" [MGTR]

CONTRIBUTORS

Thanks are due to the following members for their
submissions:

Tony Rayner [AR], Colin Dibb [CD], Chris Raper
[CMTR], Martin Raper [MGTR], Malcolm Storey
[MWS]

Siphonaptera

Ctenophthalmus nobiles (a mammal flea)
16/3/04, Upper Bucklebury, SU542683, small
female flea from nest in plastic compost bin
collected 29 Feb 04. Genal comb with 3 spines.
Spiracular fossa of tergum VIII Y-shaped. [MWS]

Hystrihopsylla talpae talpae Mole flea
16/3/04, Upper Bucklebury, SU542683, large
male flea from nest in plastic compost bin
collected 29 Feb 04. Very large blind flea with
well-developed genal and pronotal comb, and
further combs on TII, TIII, TIV. [MWS]



Mole flea
Hystrihopsylla talpae talpae

RECORDER'S REPORT FOR VERTEBRATES 2004

Tony Rayner

There are still too many gaps in this report - in particular will members please keep records in 2005 of any frog spawning, toad breeding sites, bats, water voles, and adders. We have to go back to 1999 for the last reports of Adders in this journal. Sadly we often rely on road casualties for records of mammals - it would be helpful to have more reports of sightings as you travel from home to work or supermarket!

My personal contributions all relate to Red Cow, Cholsey SU592868 unless stated otherwise

PISCES

Cottus gobio Bullhead
In the Thames and Loddon. (TDFC)

Salmo salar Salmon
Found in the Thames in very small numbers.
(TDFC)

Salmo trutta sp. Sea Trout
Found in the Thames and Loddon in very small
numbers. (TDFC)

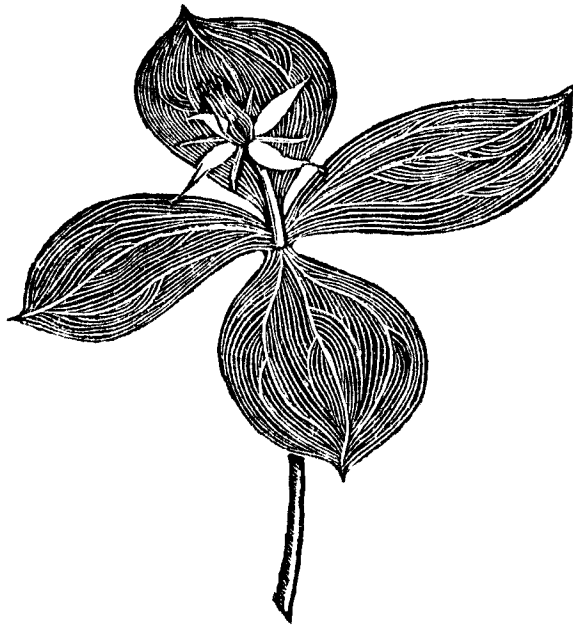
Salmo trutta Brown Trout
In the Thames and Loddon. (TDFC)

Cyprinus carpio Common Carp
In the Thames and Loddon, Pavillions Pond,
Ruscombe and Causeway Lake, Charvil. (TDFC)

Carassius carassius Crucian Carp
Found in Pavillions Pond, Ruscombe (TDFC)

The Reading Naturalist

No. 57



Published by the Reading and District

Natural History Society

2005

Price to Non Members £3.50