

DESCRIPTION OF A NEW EPHEMERID FROM INDIA*

O.P. DUBEY

School of Entomology, St. John's College, Agra-2 (India)

Family Polymitaecidae

Euthyplocia punensis, sp. nov. (Figs. 1-13).

Female imago: Length, excluding caudal cerci and terminal filament, 13.5 mm. General colour of the body brown. Head (Fig. 5) viewed in front trapezoid, width to height in the ratio of 21:10. Eyes black, broadly oval; interocellar space 5.5 times the ocellar diameter; ocelli white, with black base, elevated. Antennae (Fig. 6) yellowish-brown, segments incomplete; the first segment stout, as long as thick; second segment subcylindrical, reduced at tip, nearly 0.7 times the first, terminal segment (Fig. 7) about 5.5 times the second. Thorax (Fig. 2) brown, pronotum 1.3 times wider than long, length of mesonotum 1.5 times the pronotum, with a mesial suture on the dorsum, scutellum 0.5 times the mesonotum, rest as in figure. Fore wing (Fig. 1) 14 mm long, 7 mm wide, hyaline, venation pale brown, no free intercalaries at the hind margin; stigmatic area with four complete cross-veins, three close together and equidistant, the fourth somewhat more widely separated; M forked beyond the radial sector at the basal two-fifths of the wing, five S-shaped cross veins from the last intercalary to the wing margin. Hind wing (Fig. 4) 7 mm long, 6 mm wide, hyaline; venation pale brown, with the costal process obtuse; R normal, M forked at basal third of the wing, cross-vein well developed, first anal area with an intercalary connected with cross-vein, last anal area with three S-shaped cross-veins. Fore legs (Fig. 10) shortest, 0.2 times the length of body, femur stout, tibia slender, a little longer than femur, tarsus (Fig. 11) about 0.4 times the tibia; the first segment 1.2 times the second, the second about 0.5 the third, the third nearly 1.7 times the first; claw hooked, blunt and nearly as long as the last tarsal segment. Middle femur (Fig. 9) moderately stout, tibia slender, 1.2 times the femur; tarsus (Fig. 12) about 0.4 times the tibia, first and third tarsal segments subequal, the second a little longer than the first; claw blunt, about 1.4 times the last tarsal segment. Hind femur (Fig. 8) stoutest, tibia slender, 1.2 times the femur; hind tarsus (Fig. 13) 0.4 times the tibia, first tarsal segment 0.8 times the second, the second twice the third, third segment 0.6 times the first; the blunt claw a little more than twice the third tarsal segment. Abdomen about 0.7 times the body, yellowish-

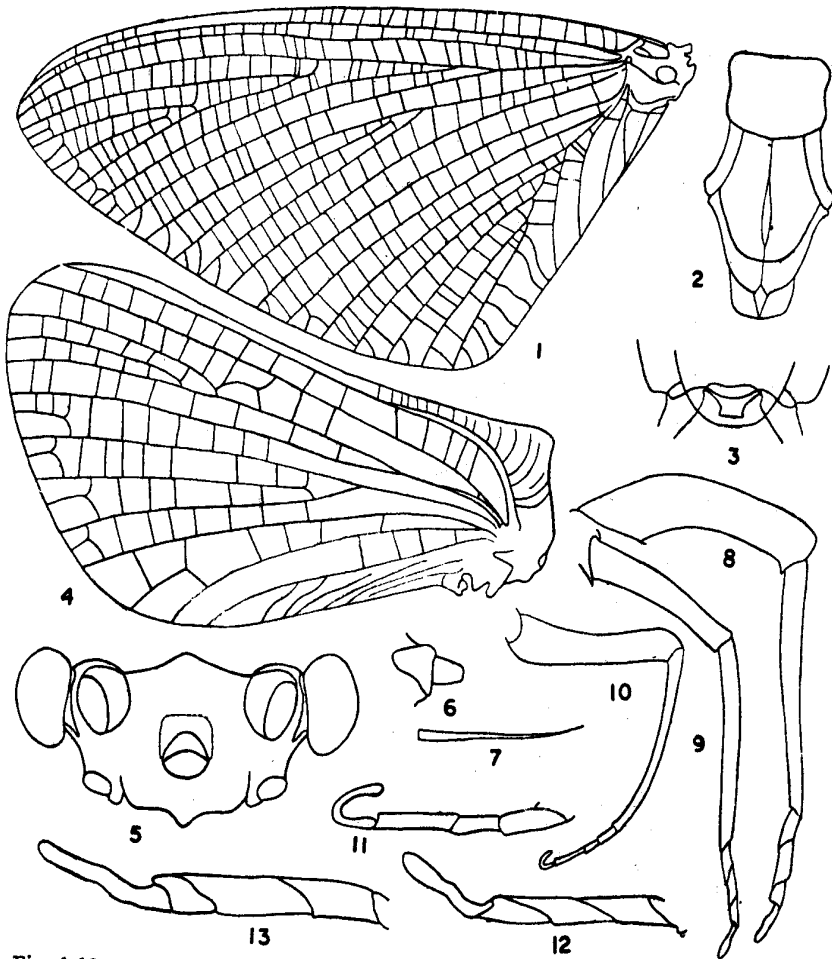
* Contribution No. 180 from the School of Entomology; Torrential Stream Insects of the Himalayas under Prof. M. S. Mani.

brown, the tergites obscurely dark-brown, the caudal cerci subequal to the body, terminal filament about half as long as caudal cerci, on the eighth sternite an egg-valve present, ovipositor yellowish-brown, surrounded by two subgenital plates (Fig. 3).

Holotype Female, *Paratypes* Females at light, National Chemical Laboratory Territory, Poona, Coll. H.N. Baijal, 11.10.1965. This is the first record of the genus *Euthyplocia* Etn. from India.

ACKNOWLEDGMENT

I thank Dr. H.N. Baijal, Department of Zoology, Agra College, Agra, for placing the specimens of this species at my disposal.



Figs. 1-13. *Euthyplocia punensis*, sp. nov. Female : 1, fore wing, 2, thorax 3, ovipositor; 4, hind wing; 5, head; 6, antenna. 7, terminal part of the antenna, 8, hind leg, 9, middle leg, 10, fore leg, 11, fore tarsus, 12, middle tarsus. 13, hind tarsus.