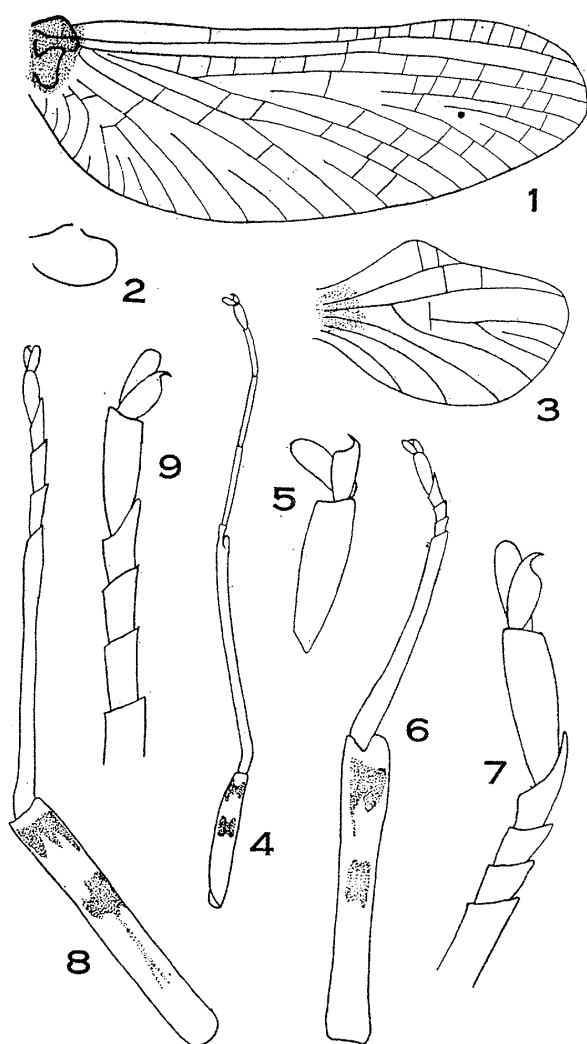


THE IMAGO OF *CHOROTERPES TRIFURCATA* UÉNO (Ephemeroptera)

By Kyuemon Gose
Gojo High-school, Gojo, Nara Prefecture

The only one Japanese representative of the genus *Choroterpes* is *C. trifurcata* Uéno which was described on the larval stage. But the adult has remained unknown.

Since 1958, I have obtained many adult specimens of this species by rearing nymphs. I give hereby the description of the adult.



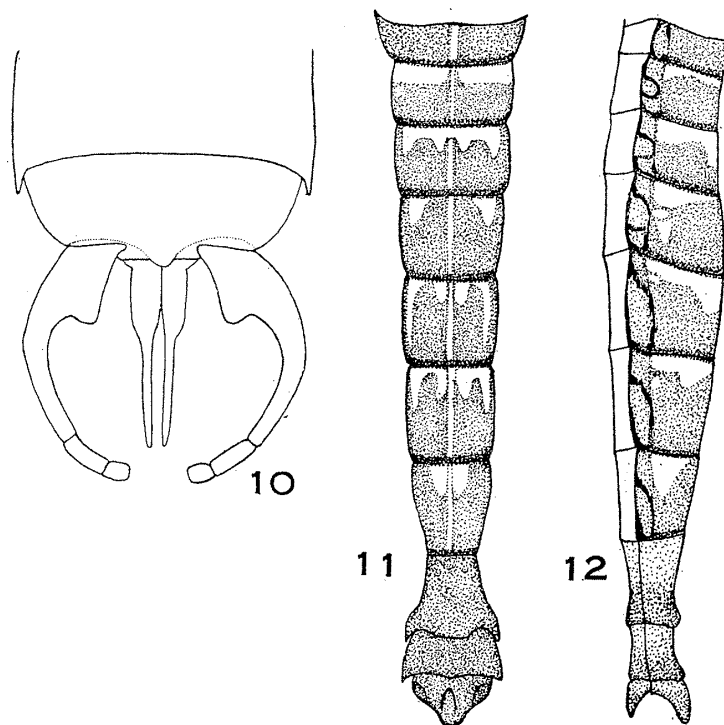
Figs. 1-9. *Choroterpes trifurcata* Uéno.
1-7: imago ♂ and 8-9: imago ♀. 1, fore-wing.
2 and 3, hind-wing. 4, fore-leg of ♂. 5, claws
of the same. 6, hind-leg of ♂. 7, hind tarsus of
♂. 8, fore-leg of ♀. 9, fore tarsus of ♀.

Choroterpes trifurcata Uéno, adult

Measurements:

Body, length	♂ 3.6-3.8mm ♀ 3.6-3.8mm
Fore wing, length	♂ 3.9-4.1mm ♀ 3.9-4.1mm
Cercus, length	♂ 4.2-4.5mm ♀ 4.2-4.5mm

Description. Male: General colour brownish. The head is brown above; antennae pale. Thorax reddish brown. Legs dull grey, tibiae and tarsi paler; each femur with two conspicuous black speckles on the middle portion and on the distal portion of the outer side. In the fore leg, femur: tibia: tarsus 1: 1.8: 1.7, tarsal joints rank 1, 2, 3, 4 (Fig. 4). In the hind leg, femur: tibia: tarsus = 3.6: 2.7: 1; tarsal joints rank 4, 3, 2=1 (Fig. 1). Claws dissimilar in all legs. Wings hyaline (Fig. 1), brown only at the base. Abdominal segments dark greyish brown; each of the tergites 1-7 narrowly band-



Figs. 10-12. *Choroterpes trifurcata* Uéno.
 10, end of ♂ abdomen, ventral view. 11-12, abdomen of an imago.
 11, dorsal view. 12, lateral view.

ed with dark brown on its posterior margin; tergites 3-6 each with a broad, nearly M shaped whitish brown marking; tergites 8-10 dark greyish brown (Fig. 11). Forceps three-jointed, the long joint (first joint) widened at the base, the second and third joints short; the second joint 2 times as long as the third joint. Penis long, simple, separated by a narrow and deep V-shaped cleft (Fig. 10). Cerci white, segments blackish at base.

Female: Similar to the male. General colour paler than the male. Legs dull grey; each femur with two black speckles as in the male (Fig. 8). In the fore leg, femur : tibia : tarsus = 1.9 : 1.8 : 1; tarsal joints rank 1, 4, 2=3 (Fig. 9). Claws dissimilar in all legs (Fig. 5). Wings hyaline, veins pale brownish. Abdomen reddish brown. Cerci white; segments blackish at base.

Nymph; See Uéno (1928). This species is very common in the Gojo district and the emergence of imago takes place in June and July.

Literature

- Imanishi, Kinji (1940). Ephemeroptera of Manchoukuo, Inner Mongolia and Chosen. Rept. Limnol. Survey of Kwantung and Manchoukuo, Kwantung, pp. 169-263.
 Uéno, Masuzo (1928). Some Japanese mayfly nymphs. Mem. Coll. Sci., Kyoto Imp. Univ., B, 4, pp. 19-63, pls. 3-17.