

PRIVATE LIBRARY  
OF WILLIAM L. PETERS

*With the compliments  
of Masuzo Ueno*

A New Japanese Mayfly.

By

MASUZO UENO

Otsu Hydrobiological Station, Otsu, Shiga-ken, Japan.



Reprinted from LANSANIA, Tokyo, Vol. 3 No. 24

May 25, 1931

## A New Japanese Mayfly.

By

MASUZO UENO,

Otsu Hydrobiological Station, Otsu, Shigaken, Japan.

[Received May 9, 1931]

*Paraleptophlebia spinosa* n. sp.

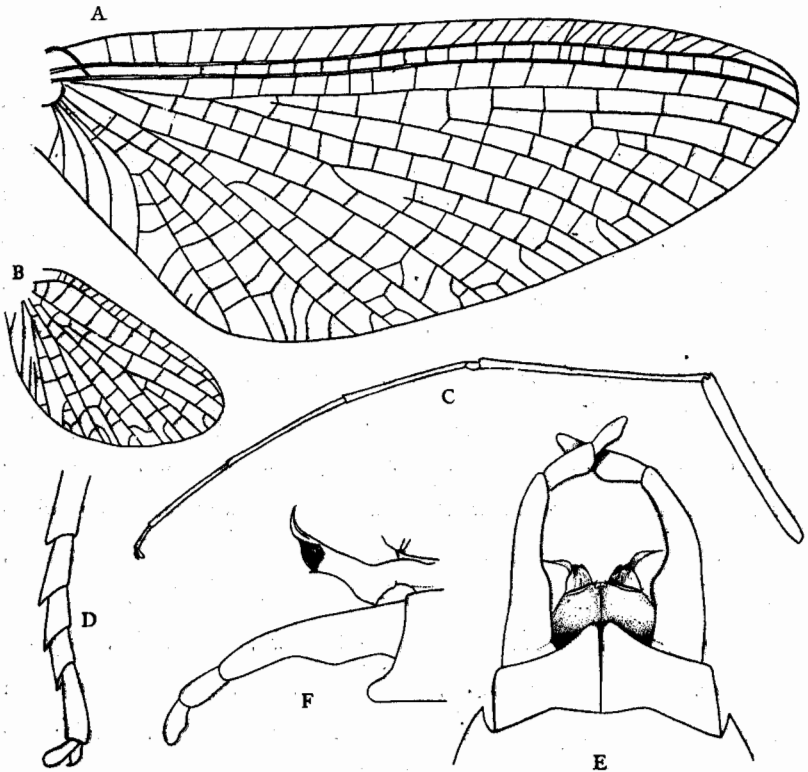
Imago ♂ (alcoholic specimen). — Turbinate eyes grey, lower eyes black; ocelli greyish white, their basal margin black. Frontal part of head sepia-brown, apex black. Pronotum reddish brown; mesonotum pitch-brown, with light brown lateral parts; metanotum blackish brown; under side of thorax blackish brown. Fore-legs reddish brown; femur darker,  $1\frac{1}{8}$  times as long as tibia; tarsus nearly as long as femur and tibia combined together, its joints rank 3-2-4-5-1, tarsal claws dissimilar each other (Fig. C), Mid- and hind-lgs brown, femur somewhat darker; hind tarsal joints rank 5-2-3-4 (exclusive of joint 1), tarsal claws dissimilar (Fig. D). Wings hyaline; its apical half yellowish amber colour, pterostigmatic region yellowish brown, veins sepia-brown, subcosta and radius somewhat yellowish light brown; venation of wings is closely allied to that of European *Paraleptophlebia submarginata* (STEPHENS), costal area of fore-wing contains 30 cross-veins (Figs. A and B).

Dorsal side of abdominal segments 1-2 brown, 3-7 whitish, vitreous, lutescent towards the hinder margin, 8-10 reddish brown, not vitreous; each segment marked with a pair of small dark brownish stripes. Under side of abdominal segments 1-2 brown, 8-9 reddish brown, 3-7 whitish vitreous as the dorsal side, with indistinct reddish brown stripes. Caudal setae  $1\frac{1}{4}$  times as long as body, median seta subequal to lateral ones, reddish brown,

joinings whitish yellow. Tenth sternite deeply cut to the base, forming two triangular plates. Forceps 3-jointed; first joint long, dilated towards the base, somewhat curved inwards, reddish brown; last two joints whitish (Fig. E). Penis-lebes yellowish brown, each with a long acute projection curved upwards and outwards (Figs. E and F).

Body 9 mm., fore-wing 10 mm., caudal seta 12 mm.

*Type*; 1 ♂, coll. by K. IMANISHI, 10, April, 1931, Kibune, province of Yamashiro. Type in Mr. IMANISHI's collection.



A, fore wing. B, hind wing. C, 1 st. leg. D, tarsus of hind leg. E, F, forceps.

This new species can easily be distinguished from all known species of the genus *Paraleptophlebia* LESTAGE, by the amber-coloured apical half of the fore-wing and a structure of the genital part, especially that of penis-lobes.

The nymph of this species is common in streams and rivers in the Kyoto region. The emergence begins in the end of March and continues till the middle of April. The subimago closely resembles to the imago but its wings are subhyaline and dark grey. The morphology and biology of this nymph shall be described in more detail in a future paper.