

安徽宽基蜉属一新种*

(蜉蝣目:细裳蜉科)

吴 钊 尤大寿

(南京师范大学生物系 210024)

摘要 本文报道在安徽汤口采集的宽基蜉属一新种——安徽宽基蜉。

关键词 蜉蝣目 细裳蜉科 宽基蜉属 新种

宽基蜉属 *Choroterpes* 是一个广布属,作者于1987年6—8月在安徽汤口采到安徽宽基蜉 *Choroterpes (Euthraulius) anhuiensis*, 新种的雄成虫28头、亚成虫30头;雌成虫41头、亚成虫25头。新种的模式标本保存在南京师范大学生物系。

安徽宽基蜉,新种 *Choroterpes (Euthraulius) anhuiensis* sp. nov.

雄成虫(酒精保存): 体长5—6mm,体灰褐色,复眼大,两眼在头顶背面相接触,上复眼桔红色,下复眼黑色。胸部黄褐色,前翅长5.5—6.5mm, C脉区和Sc脉区不透明, Rs从翅基部到翅端不到 $\frac{1}{4}$ 处分叉,肘脉区有闰脉5条(图1)。后翅小,前缘脉在距离基部将近 $\frac{1}{2}$ 处有一圆形突起, Sc区有横脉3条(图2、3)。足淡黄褐色,各腿节上有两块黑褐色斑纹,所有的爪均为一钝一尖。前足腿节、胫节、跗节之比为1.6:2.6:2.0,跗节长度的排列顺序为1,2,3,4(图4、5)。后足腿节、胫节、跗节之比为1.8:1.7:0.5,跗节长度的排列顺序为4,3,1,2(图6、7)。腹部背面灰褐色,第2—10节背板中央有纵走的黑褐色条纹,在第3—9节背板上各有近似“W”形的灰褐色斑纹,以5—8节较明显(图8)。

尾缺淡黄褐色,3节,第1节最长,基部宽,且向内弯曲,第2、3两节短,节间均不完全分开,第2节的长度约为第3节的两倍。阳茎很短,分两叶,基部宽,顶端尖,两叶间有一“V”形裂缝(图9、10)。尾须3根,中尾丝比侧尾须略长。

雌成虫(酒精保存)体色较雄成虫稍深,体长4.5—6mm,复眼小,前翅长5—6.5mm。前足腿节、胫节、跗节之比为1.8:1.7:0.6,跗节长度的排列顺序为4,1,2,3。后足腿节、胫节、跗节之比为1.7:1.3:0.5,跗节长度的排列顺序为4,3,1,2(图13、14)。腹部的“W”形斑纹略浅,其它如翅脉、足的颜色等与雄虫相同。

模式标本 正模♂(成虫),配模♀(成虫),安徽汤口,1987. VII.2。副模17♂♂22♀♀(成虫)、20♂♂10♀♀(亚成虫),安徽汤口,1987. VII.2—4, 10♂♂18♀♀成虫、10♂♂

本文于1988年11月29日收到。

* 张俊同志参加了一部分标本采集,特此致谢。

15 ♀♀ (亚成虫), 安徽汤口, 1987. VII. 14—16。

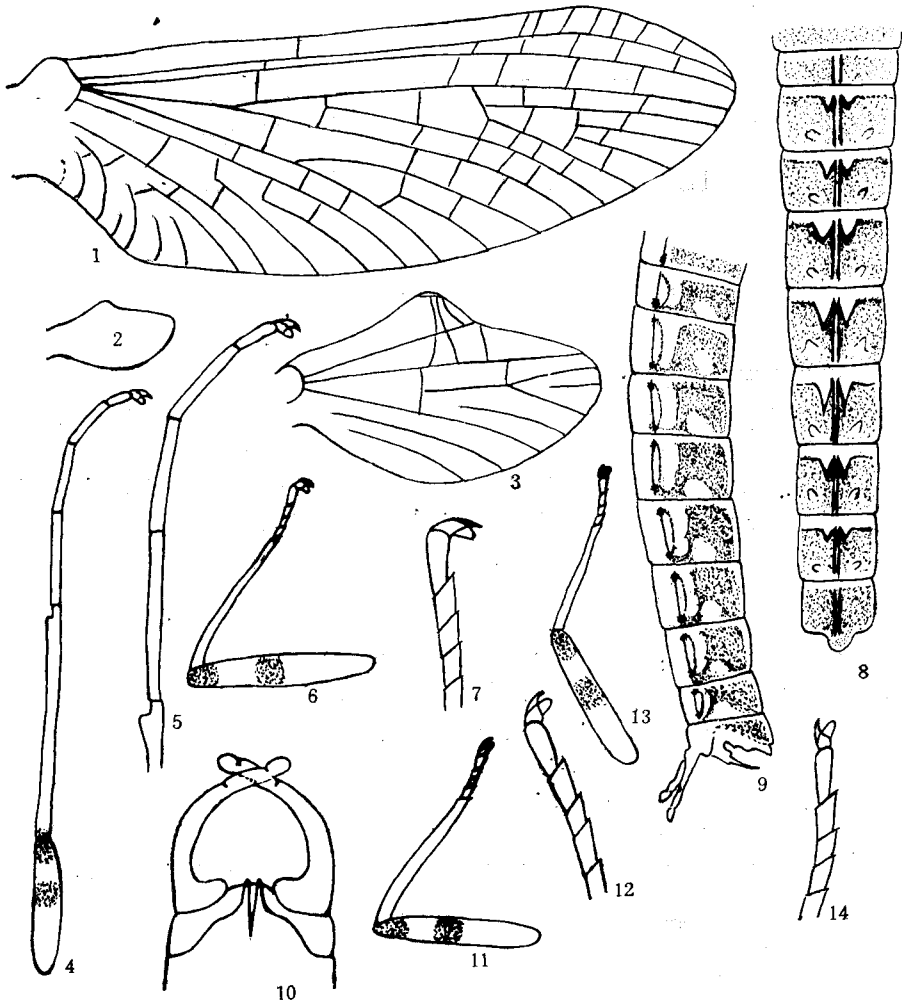


图 1-4 安徽宽基蜉, 新种 *Choroterpes (Euthraulus) anhuiensis* sp. nov.

1—10 雄成虫 (♂ imago): 1. 前翅 (fore wing) 2. 后翅 (hind wing) 3. 后翅放大 (detail of hind wing) 4. 前足 (fore leg) 5. 前足跗节放大 (detail of fore tarsus) 6. 后足 (hind leg) 7. 后足跗节放大 (detail of hind tarsus) 8. 腹部背面 (abdomen, dorsal view) 9. 腹部和外生殖器侧面 (abdomen and genitalia, lateral view) 10. 外生殖器腹面 (genitalia, ventral view) 11—14. 雌成虫 (♀ imago): 11. 前足 (fore leg) 12. 前足跗节放大 (detail of fore tarsus) 13. 后足 (hind leg) 14. 后足跗节放大 (detail of hind tarsus)

参 考 文 献

- 尤大寿、吴钊、归鸿 1980 南京宽基属蜉蛄一新种(蜉蛄目: 细裳蜉科)动物分类学报 5(4): 388—391
 Edmunds, G. F. Jr. S. L. Jenson and L. Berner. 1976 The mayflies of North and Central America. Univ. of Minnesota Press, Minneapolis.
 Gose, K. 1983 The imago of *Choroterpes trifurcata* Uéno (Ephemeroptera). *Kontyu* 31; 140—141.
 Needham, J. G. Traver, J. R. and Hsu, Y. C. 1935 The biology of mayflies with a systematic account of North American species. *Comstock Pub. Co., Ithaca.*

Peters, W. L. and G. F. Edmunds, Jr. 1970 Revision of the generic classification of the Eastern Hemisphere Leptophlebiidae (Ephemeroptera) *Pacific Insects* 12(1): 157—240.

**A NEW SPECIES OF THE GENUS *CHOROTERPES* FROM
ANHUI PROVINCE, CHINA
(EPHEMEROPTERA: LEPTOPHLEBIIDAE)**

WU TIAN YOU DA-SHOU

(Department of Biology, Nanjing Normal University)

***Choroterpes anhuiensis* sp. nov.**

Male imago (in alc.): Length of body 5—6mm. General colour grey-brown. Upper part of eyes orange red, lower part black. Fore wing 5.5—6.5mm long and hyaline, except C & Sc areas opaque, vein Rs forked at 1/4 of distance from base to apical margin. Hind wing small, costal projection near the middle, costal area with 3 cross veins. In the fore leg, femur: tibia: tarsus=1.6:2.6:2.0, tarsal joints rank 1,2,3,4. Forceps of male genitalia 3 segmented, first segment the longest and base broad, 2nd and 3rd segments short and not entirely divided. Penial lobes very short, with a narrow V-shaped, cleft in between.

Female imago (in alc.): Length of 4.5—6mm. General colour deeper than the male. In the fore leg, femur: tibia: tarsus=1.8:1.7:0.6, tarsal joints rank 4, 1, 2, 3. Subanal plate with a shallow concavity, other characters similar to the male.

Holotype ♂ imago, Allotype ♀ imago, Tang Kou (30°13'N, 118°2'E), Anhui Province on July 2, 1987. Paratypes 17♂♂22♀♀ imagoes, 20♂♂10♀♀ subimagoes, same locality, on July 2—4, 1987. 10♂♂ 18♀♀ imagoes, 10♂♂15♀♀ subimagoes, same locality, on August 14—16, 1987. All types preserved in the Department of Biology, Nanjing Normal University.

Key words Ephemeroptera Leptophlebiidae *Choroterpes* new species